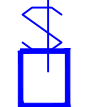
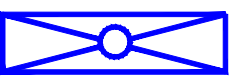



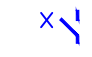




**LEGEND:**

-  PROVIDE A SINGLE POLE 120 VOLT SWITCH
-  1 X 4 X 2 LAMP 120 VOLT HIGH OUTPUT CEILING/PENDANT MOUNTED FLUORESCENT FIXTURE WITH WIRE GUARD, HUBBELL CROWN SERIES OR APPROVED EQUAL.
-  DUPLEX RECEPTACLE WITH GROUND FAULT CIRCUIT INTERRUPTER
-  208 VOLT 70 W WALL PACK FIXTURE P=DUSK TO DAWN PHOTO CELL CONTROL, LITHONIA LIGHT MODEL TWAC70MTBLPI
-  TRANSFORMER
-  ELECTRICAL DISCONNECT DEVICE NUMBER INDICATED.
-  TIMER
-  PRESSURE TRANSDUCER (BY CONTROL PANEL VENDOR)

**HVAC NOTES:**

UH-1 DAYTON ELECTRIC UNIT HEATER MODEL 2YU61, 3kW 277 VAC 1 PHASE OR APPROVED EQUAL SUPPLIED AND INSTALLED BY ELECTRICAL CONTRACTOR.

EF-1 GREENHECK DIRECT DRIVE CENTRIFUGAL SIDEWALL 175 CFM EXHAUST FAN MODEL# CW-075-D WITH EXHAUST DAMPER OR ENGINEER APPROVED EQUAL. SUPPLIED AND INSTALLED BY GENERAL CONTRACTOR.

PL-1 GREENHECK ESD-435 16X16 175 CFM LOUVER WITH A VCD-40 ULTRA LOW LEAKAGE CONTROL DAMPER AND BELIMO ELECTRICAL ACTUATOR FSLF-120S OR ENGINEER APPROVED EQUAL. SUPPLIED AND INSTALLED BY GENERAL CONTRACTOR.

QMARK WALL THERMOSTAT OR APPROVED EQUAL. SUPPLIED BY THE GENERAL CONTRACTOR AND INSTALLED BY THE ELECTRICAL CONTRACTOR.

PANEL SCHEDULE						
PANEL #:		MDP	FEED:	4-4/0 277°C	MOUNT:	SURFACE
BUS:		200	VOLTS: XXX/XXX			
MAIN BREAKER:		200 A	PHASE:	X	WIRE:	X
CKT #	AMP	CIRCUIT	CIRCUIT	AMP	CKT#	
3	PCB	MAIN PUMP BREAKER	TRANSFORMER	XX	4	
5					6	
7	PCB	MAIN PUMP BREAKER	UH-1	XX	10	
11					12	
13					14	
15	XX	SPARE	SPARE	XX	16	
17					18	
19					20	
21					22	
23					24	
25					26	
27					28	
29					30	
31					32	
33					34	
35					36	
37					38	
39					40	
41					42	

BREAKER SIZED TO PUMP STATION SEE NOTES

PANEL SCHEDULE						
PANEL #:		LP-1	FEED:	3-#2 & G 27°C	MOUNT:	SURFACE
BUS:		200	VOLTS: XXX/XXX			
MAIN BREAKER:		200 A	PHASE:	X	WIRE:	X
CKT #	AMP	CIRCUIT	CIRCUIT	AMP	CKT#	
1	XX	SPARE	BATTERY CHARGER	XX	2	
3	XX	GEN. BLOCK HTR	EXHAUST FAN	XX	4	
5	XX	LIGHTS	MISC OUTLETS 2	XX	6	
7	XX	MISC OUTLETS 1	MISC OUTLETS 4	XX	8	
9	XX	MISC OUTLETS 3	OUTDOOR RECEPTACLE	XX	10	
11	XX	SPARE	SPARE	XX	12	
13	XX	SPARE	SPARE	XX	14	
15					16	
17					18	
19					20	
21					22	
23					24	
25					26	
27					28	
29					30	

**NOTES:**

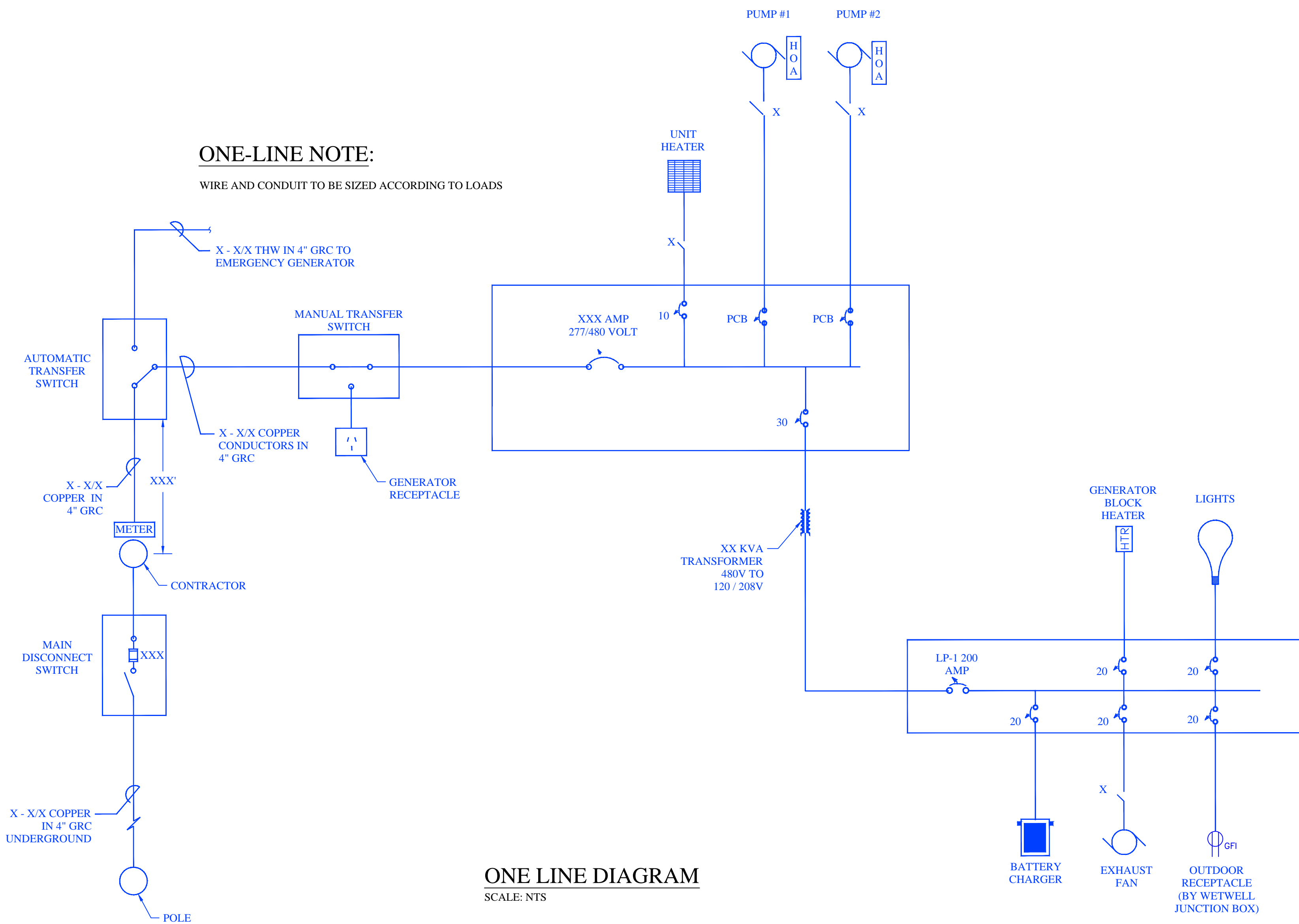
PCB = SITE LOCATION XX AMP  
 CONTRACTOR SHALL PROVIDE KEYS FOR GENERATOR. (2) KEYS PER LOCK.  
 ALL PANELBOARDS AND CIRCUIT BREAKERS SHALL BE SQUARE D (SWITCH RATED).  
 ALL GENERATOR SHALL BE CAT WITH SOUND ATTENUATED ENCLOSURES.

**PANEL SCHEDULE**

SCALE: NTS

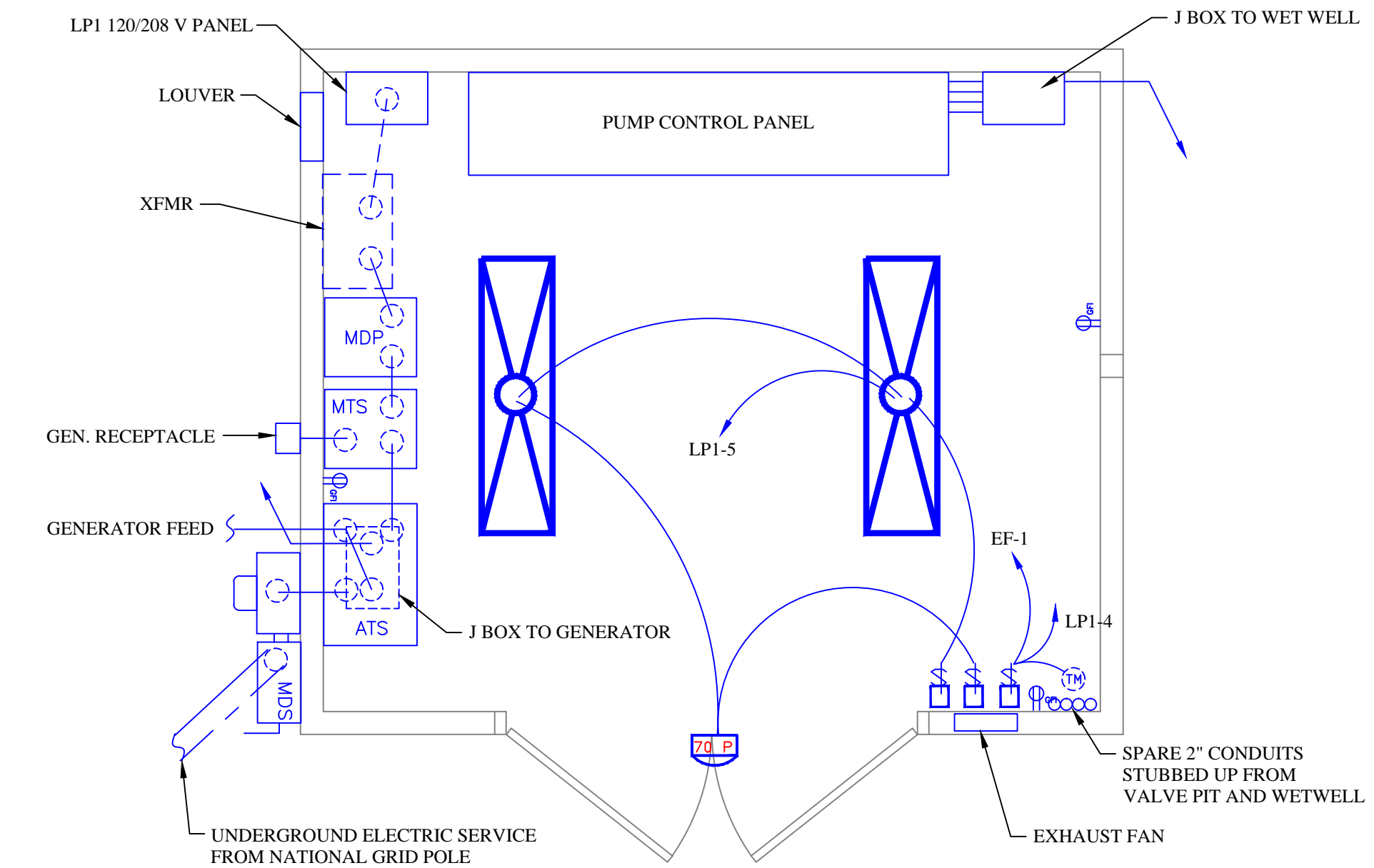
**ONE-LINE NOTE:**

WIRE AND CONDUIT TO BE SIZED ACCORDING TO LOADS



**ONE LINE DIAGRAM**

SCALE: NTS



**CONTROL BUILDING ELECTRICAL FLOOR PLAN**

SCALE: 1/2"=1'

**REVISIONS**

DATE	BY	DESCRIPTION
3/14/11		

**ELECTRICAL FLOOR PLAN AND ONE LINE DIAGRAM**

**TOWN OF BETHLEHEM  
 DEPARTMENT OF PUBLIC WORKS  
 445 DELAWARE AVE. DELMAR, NY 12054**

