



Park benches along the river at Henry Hudson Park

## You should know:

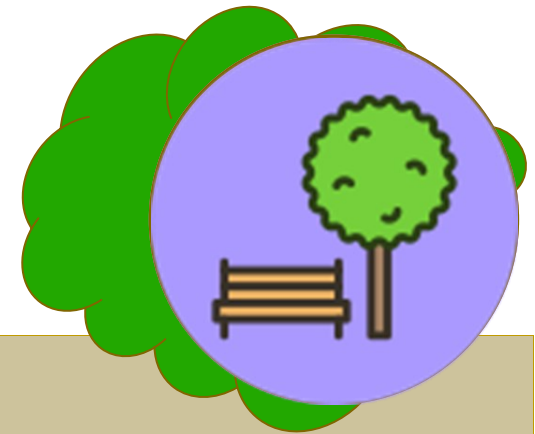
Donated trees and benches (including plaques) are the property of the Town of Bethlehem.

Not all tree and park choices are available at all times. Site location is dependent on the needs of the Parks and Recreation Department and planning processes that may already be underway.

Once the tree is planted or the bench is placed, neither the Town nor Friends of Bethlehem Parks and Recreation shall be responsible for loss or damage.

All tree and bench donations include a donation to Friends of Bethlehem Parks and Recreation to be used in furtherance of our mission. (For further information on our organization, go to our website at [friendsofbethlehemparks.org](http://friendsofbethlehemparks.org).)

Friends of Bethlehem Parks and Recreation is a Section 501(c)(3) nonprofit organization. All donations are fully deductible to the extent allowed by law.



BETHLEHEM PARKS & RECREATION

Commemorative

Tree &  
Bench

Program

THANK YOU  
FOR YOUR INTEREST IN OUR  
Commemorative  
Tree & Bench  
Program!

### Friends of Bethlehem Parks and Recreation

c/o Parks & Recreation Dept.  
261 Elm Avenue, Delmar NY 12054  
[friendsofbethlehemparks.org](http://friendsofbethlehemparks.org)  
[info@friendsofbethlehemparks.org](mailto:info@friendsofbethlehemparks.org)



Like us on Facebook.

TB06-2015

SPONSORED BY



Friends

Bethlehem Parks and Recreation

What better way to  
remember a  
loved one  
~ or ~  
celebrate a  
special event  
than to  
plant a tree  
~ or ~  
place a bench  
in a public park for  
all to enjoy  
for years to come!

## Donate a tree

Donation level: \$400

Your choice of:



Evergreen tree



Shade tree



Flowering tree

Trees will be a minimum of 5 feet tall — size will vary due to type of tree selected.

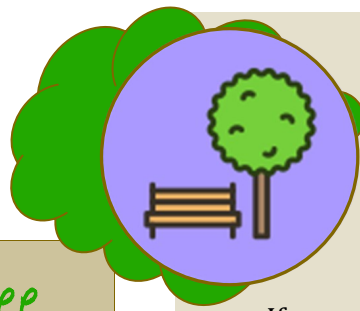
Trees do not include a plaque. Any added plaques or decorations may be removed.

Trees can usually be planted in the Bethlehem town park (and general area) of your choice, subject to Town approval.

Trees cannot be planted in certain locations due to underground infrastructure.

### *Interested in a higher-level donation?*

Larger, more well-established trees may be placed. **Please contact us for details!**



## How to Donate

If you wish to donate a tree or park bench, send us an email at:

[info@friendsofbethlehemparks.org](mailto:info@friendsofbethlehemparks.org) or write to us at the address below. Please include:

- Your contact information, including name, address, and the best way to contact you — either email address or phone number.
- Whether you wish to donate a tree or a bench.
- **If you wish to donate a tree**, please include your choice of evergreen, shade, or flowering tree.
- **If you wish to donate a bench**, please include the inscription you would like on the plaque (up to 3 lines).
- The name of the park in which you would prefer the tree or bench placed, including the specific area if applicable.
- The names and addresses of any individuals you would like to receive notification of your donation.

Once we establish that we can accommodate your wishes, we will ask you to submit a check payable to “Friends of Bethlehem Parks and Recreation” at the address below.

## Donate a park bench

Donation level: \$550

*Park bench (without plaque) on the Fitness Trail at Elm Avenue Park*



In accordance with Town specifications, park benches are 6 feet long with concrete sides and wooden slats.

A cast bronze plaque (3” x 8”) with an inscription of your choice will be attached to the bench.

Park benches can usually be placed in the Bethlehem town park (and general area) of your choice. We cannot guarantee that benches will not be moved by park patrons.

### *Interested in a higher-level donation?*

The Elm Avenue Park Pool Complex is in need of pool benches. **Please contact us for details!**