



Volume V Issue 7

# Town of Bethlehem e-Newsletter

**August 2011**

445 Delaware Avenue, Delmar, NY 12054  
518.439.4955

[www.townofbethlehem.org](http://www.townofbethlehem.org)

## Town Board

Sam Messina, Supervisor  
Joann Dawson, Board Member  
Mark Hennessey, Board Member  
Mark Jordan, Board Member  
Kyle Kotary, Board Member

## August Meeting Schedule

All meetings are held at the Town Hall unless otherwise indicated

### Zoning Board of Appeals

Wednesday, August 3, 7:00 p.m.

### Town Board

Wednesday, August 10, 6:00 p.m.

### Planning Board

Tuesday, August 16, 6:00 p.m.

### Zoning Board of Appeals

Wednesday, August 17, 7:00 p.m.

### Development Planning Committee

Thursday, August 18, 10:00 a.m.

### PaTHs Committee

Tuesday, August 23, 7:00 p.m.

### Industrial Development Agency

Wednesday, August 24, 8:00 a.m.

### Town Board

Wednesday, August 24, 6:00 p.m.

### 20/20 Implementation Committee

Thursday, August 25, 7:30 a.m.

For agendas and to verify locations and times, see:

[www.townofbethlehem.org/pages/agenda/agenda.asp](http://www.townofbethlehem.org/pages/agenda/agenda.asp)

## Upcoming Dates to Remember

Change in dates - Portion of Fuera Bush Road scheduled to be closed 8/1 - 8/21

School Supply Drive through August 8

Monday, August 1 - Youth Golf Clinic at Colonial Acres begins (August 1-4)

Friday, August 5 - "Dive-in" Movie at the Elm Avenue Pool

Monday, August 8 - Food Stamp Assistance and Medicaid Representative at Town Hall, appointment 439-4955 x1176

Tuesday, August 9 - Car Seat Check, free, reservation required, 439-9973

Thursday, August 11 - Free Senior Legal Services Program at Town Hall, appointment 439-4955 x1176

Saturday, August 13 - Pool hours change

Monday, September 5 - Pool complex closes for the season

Dogs found in Town now available for adoption, see below

## From the Supervisor

For the past eighteen months as your Town's Supervisor, I have written and spoken about the challenges and opportunities before us and what I believe we should do about them.

Looking back, and forward, I feel that the Town of Bethlehem is in a good position in the three essential areas that should be the litmus test for any local government: fiscal sustainability; quality of life; and, openness and transparency. These are the principles that I will focus on for my remaining six months as Supervisor since they will provide a solid foundation for all of us to build on in the future.



With this background, and my experience as Supervisor, I thought it would be useful to state the values I believe are necessary to make Bethlehem the best Town and local government anywhere.

- **Vision:** "The Future Begins Now" is always a true statement. In every action we take now, we need to consider future impact. And, at the same time, we should think clearly about the Town we want to be in the future, and govern our current actions accordingly.
- **Difficult Decisions:** We need to have the courage and flexibility to engage and make difficult decisions, because this is how we can best serve the public, face ever-changing challenges and solve problems.
- **A Real Team:** Elected representatives, appointed officials and staff need to always work together as a team. This can only be done when we demonstrate mutual respect for each other and conduct the public's business, with the highest ethical standards, professionalism and civility.
- **Balance:** Balance means excellence, not mediocrity. In economic development and planning, managing our budget, serving all areas of our Town, delivering services through larger programs and smaller ones, and in so many other ways, good judgment and balance must go hand-in-hand.

I have no doubt that Bethlehem's future will be bright if we commit our efforts to fiscal stability, quality of life and openness and transparency. Beyond that we must have a vision, be willing to make difficult decisions, work together as a real team and demonstrate balance.

Sincerely,

Supervisor Sam Messina



### Did You Know?



#### Some types of projects that require a permit from the Town

Fences, roofing, decks, hot tubs, sheds, demolition, additions, alterations, clearing and grading, inserts (e.g., gas logs), pools, porches, ramps, signs, sprinkler systems (indoor and outdoor) and wood burning furnaces (exterior). Contact the [Building Department](#) if you have any questions about a project you may be considering undertaking.

**CHANGE IN DATES** Portion of Feura Bush Road closed 8/1 - 8/21

On **August 1**, 2011, Route 910A (Feura Bush Road) will be closing approximately 50 feet west of Ackerman Avenue to replace a culvert. The road will remain closed until **August 21** with traffic directed to a signed detour route. The detour route will utilize State Routes 335 (Elsmere Avenue) and 32 (the Delmar Bypass and Elm Avenue.) During the closure, all properties in the area will remain accessible to residents and emergency responders; however, no travel through the project site will be allowed until the road is officially reopened. If you have any questions regarding this work, please contact the [NYS Department of Transportation](#) - Region One, at 439-3774.

**Bethlehem School Supply Drive**

The Bethlehem Food Pantry collects school supplies for children in the **Bethlehem Central**, **RCS** and **Guilderland** School Districts whose families live in our town and are eligible to use a local Food Pantry

Donations of school supplies may be dropped off at the Bethlehem Area YMCA or at the Senior Services Department at Town Hall, 445 Delaware Avenue in Delmar between the hours of 8:30 a.m. and 4:30 p.m. Monday through Friday **before August 8, 2011**.

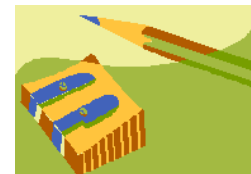
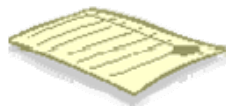
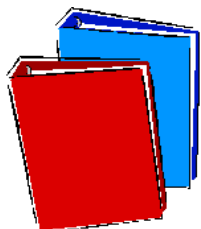
Supplies needed include:

Locker Stockers, Composition Notebooks, Calculators TI-30, 3 x 5 Index Cards, Two-pocket Folders, Post-It Notes, Washable Markers, 1 1/2 inch Binders, Subject Dividers, Pencil Sharpeners, Notebooks (single and 3-subject), Back Packs, Master Locks, Pencil Pouches/Boxes, Plastic Compasses and Protractors, Scissors (dull and sharp), Highlighters, Pink Erasers, Boxes of Facial Tissues, Wide-Rule Paper, Glue Sticks, Black/Blue Pens, Sharpie Markers

Questions?

Call Senior Services, Outreach Department at 439-4955, extension # 1173, #1174 or #1175.

Sponsored by: Bethlehem Senior Projects, Inc. and the Town of Bethlehem



### **Fishing Platform at Henry Hudson Park is OPEN!**



### **Parks and Recreation Department News**

#### **POOL HOURS CHANGE AUGUST 13 - OPEN UNTIL LABOR DAY!**

From August 13 to September 5 the pool hours will be Monday - Friday 11:30 a.m. - 7:30 p.m. AND Saturday, Sunday and Labor Day 11 a.m. - 7 p.m. Prior to August 13, hours are 11 a.m. - 8 p.m. daily.

### **POOL COMPLEX RULES**

#### **Renew Your 2010 Pool Pass On-line, by Mail or Visit the ID Room**

**NEW** this year... renew your pool pass online. Renew at your convenience. This option is only available to those residents who own property in the Town of Bethlehem.

Renew by mail if you have a 2008, 2009 or 2010 pass (with a bar code)! Town of Bethlehem residency will be verified using 2011 property tax rolls. If you are not a Bethlehem property owner, you must provide proof of residency. Complete the form at the following link: <http://www.townofbethlehem.org/images/parks/2011PoolPassRenewalForm.pdf>.

The ID room at the Parks office is also open for in-person renewal and for all those with a pass from 2007 or before who need a new pass. Proof of residency is required (see link below for details). Details on residency requirements, fees, and hours are available in the Park Playbook or on line at: <http://www.townofbethlehem.org/images/parks/2011SummerActivityPlayBook.pdf>.

### **Party Reservations at the Elm Avenue Park Pool**

Residents may now reserve the "arts and crafts" shelter and surrounding grass area near Splash Islands for parties. Reserve your date now! Form available at the Parks Office or at [http://www.townofbethlehem.org/images/parks/Form\\_PoolParty.pdf](http://www.townofbethlehem.org/images/parks/Form_PoolParty.pdf).



### **Colonial Acres Golf Course is Open!**



Punch cards are available for \$125 and are good for 10 rounds during the 2011 season! Mondays and Thursdays are Senior Days (\$11 for those age 62+)

### **Youth Golf Clinic at Colonial Acres**

August 1 - 4 (5th is rain date) from 7 - 8 p.m.

For children in grades 3-12, this 4 day clinic will cover putting on Monday, chipping on Tuesday, full swing and irons on Wednesday and fun games and competitions on Thursday. Come on out and "divot" a try!

### **Gift Cards Are Here!**

Give the gift of fun! Gift Cards can be used for golf passes, recreation activities, pool passes and all your recreation needs.

### **Camp Adventure Registration Continues**

Camp Adventure will run until August 12, register for as many one week sessions as you want. You can access a list of camp trips by clicking the following link: <http://www.townofbethlehem.org/pages/parksMain/parksCampCorner.asp>. Camp Adventure is held daily from 9:00 AM to 3:30 PM at the Elm Avenue Park Large Pavilion. Camp Adventure is inspected twice a season by the Albany County Department of Health.

### **Fall Program Registration**

Be sure to look for the Park "Playbook" which will be mailed out to all residents by mid August. Inside you will find the fall schedule of activities and special events. Please remember, online or mail-in registration prior to the lottery spin deadline is the best way to secure your participation in a given activity.

### **Pavilion Reservations for 2011**

Residents of the Town or Town based organizations may reserve the pavilions at Elm Avenue Park, Henry Hudson Park and Maple Ridge Park for recreational functions. Permit forms and fee information are available on the town website. Permits for all users will be issued on a first come, first paid basis. Pavilion availability may be viewed online via our new system [www.townofbethlehem.org/parksonline](http://www.townofbethlehem.org/parksonline).

### **Tobacco Free Zones in Parks**

Playgrounds, athletic fields, tennis and basketball courts, and the pool complex are off limits to the use of any tobacco products. Thank you for your compliance.



### Dogs in Parks



Please remember that for the safety of our residents and the cleanliness of our parks, dogs are not permitted in any park or playing field area. The Dog Park located on the bypass extension is the perfect place for dogs to run and socialize. A permit from the Town Clerk is required. For more information follow this link: <http://www.townofbethlehem.org/pages/parkElm/parkElmDog.asp>

## SPECIAL EVENT

Use your User ID and password and log on to our online registration system to view the new Event Calendar.

### Dive-In Movie at the Pool

**Friday, August 5, 8:15 p.m. - Elm Avenue Park Pool**

**Free admission into the pool after 7:30 p.m.**



Join us for a late night swim and movie under the stars on the big screen. This year's movie is "Toy Story 3". All pools and Splash Islands will be open. The snack bar will be open. Children under 9 years of age must be accompanied by an adult. Sorry, no floats in the pool.

*In case of rain, this event will be held at the Elm Avenue Park large pavilion.*





### Did You Know?



#### How to get a copy of the Deed to your property

Deeds are filed in the Albany County Clerk's Office, 32 Russel Road, Albany, NY 12206-1324. Deeds are filed by Liber and Page numbers. To obtain a copy of your Deed, contact the County Records Department at (518) 487-5120. Deeds and Mortgages filed after 1980 are also available online via the County Clerk's web site at <http://www.albanycounty.com/departments/clerk/default.asp?id=371>.

### Bethlehem Police Deploy Bicycle Patrols This Summer

This summer officers from the Bethlehem Police Department will be seen patrolling streets, neighborhoods and the business districts on bicycles. Detectives Chad Rice and Michael Whiteley of the department's Family Services Unit, normally tasked with being assigned to the High School and Middle School as School Resource Officers, have successfully completed the rigorous 40-hour training course. The course, held at the SUNY Albany Campus, consisted of approximately 100 miles of riding to include stairs and firearms training at the police range.

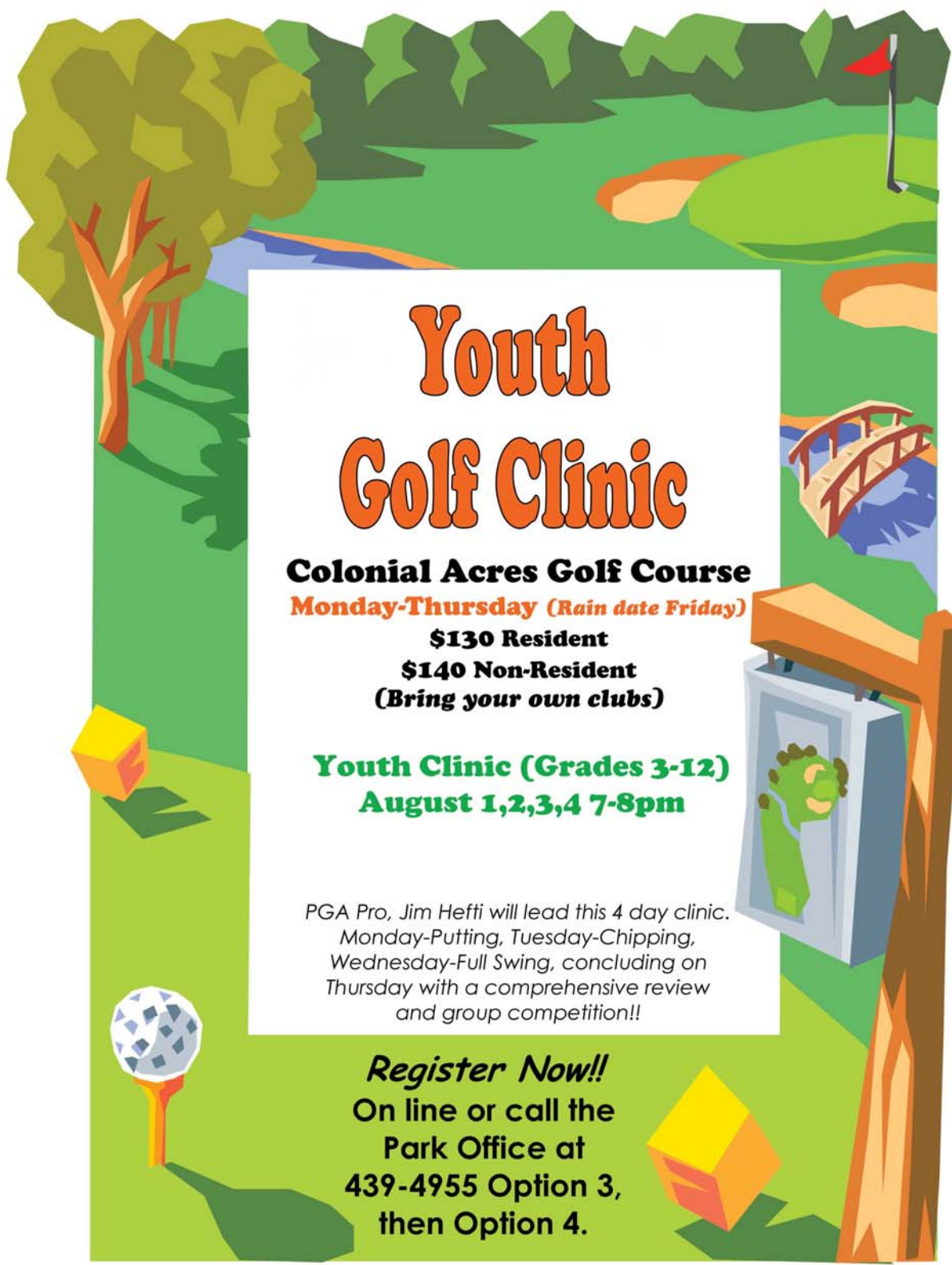
According to Chief Louis Corsi, "It is the policy of the Bethlehem Police Department to solve community problems of crime and disorder and to create strong partnerships with the community it serves. This is accomplished by utilizing

Community Oriented Policing and Problem Oriented Policing techniques. The Bicycle Patrol is one tool to be utilized in these efforts. The bicycle patrol will supplement vehicle operation and provide a presence in areas of the Town not readily accessible by officers in police cars. The bicycle patrol also promotes greater public contact, while increasing police presence in specific problem areas".

The purchase of these bicycles and related equipment came from the department's asset forfeiture funds.

Bethlehem Supervisor Sam Messina said, "this new police bike patrol is another positive action the Town is taking to get our officers closer to the people and neighborhoods and more involved in our community".





# Youth Golf Clinic

**Colonial Acres Golf Course**

**Monday-Thursday (Rain date Friday)**

**\$130 Resident**

**\$140 Non-Resident**

**(Bring your own clubs)**

**Youth Clinic (Grades 3-12)**

**August 1,2,3,4 7-8pm**

PGA Pro, Jim Hefti will lead this 4 day clinic.  
Monday-Putting, Tuesday-Chipping,  
Wednesday-Full Swing, concluding on  
Thursday with a comprehensive review  
and group competition!!

***Register Now!!***  
**On line or call the**  
**Park Office at**  
**439-4955 Option 3,**  
**then Option 4.**



### Upcoming Local Blood Drives

Voorheesville Fire Department, Saturday, August 13  
8:00 a.m. - 1:00 p.m.  
12 Altamont Road, Voorheesville

Bethlehem Public Library, Saturday, August 20  
9:30 a.m. - 2:30 p.m.  
451 Delaware Avenue, Delmar

Guilderland YMCA, Saturday, August 27  
8:00 a.m. - 1:00 p.m.  
250 Winding Brook Drive, Guilderland

Town of Bethlehem, Wednesday, September 7  
1:00 p.m. - 6:00 p.m.  
Town Hall, 445 Delaware Avenue, Delmar

Appointments appreciated, 1-800-GIVE-LIFE (1-800-448-3543). Walk-ins will be taken as time allows. Positive ID, such as a driver's license, is required.  
If you choose and are eligible, you may donate double red cells at these drives.

See the Red Cross web site for more information or to schedule an appointment (click on Refresh if the page doesn't appear the first time)  
<http://www.redcrossblood.org/make-donation>

**Blood Drive at Town Hall, Wednesday, September 7 from 1-6 p.m.**

### Youth Employment Service

#### Need part-time help?

The [Youth Employment Service \(Y.E.S.\)](#) has a large database of reliable teens eager for part-time work. Town of Bethlehem residents needing help with housework, yard work, baby-sitting, animal care or handyman work should contact Y.E.S. Businesses can also contact the service for help finding part-time staff.

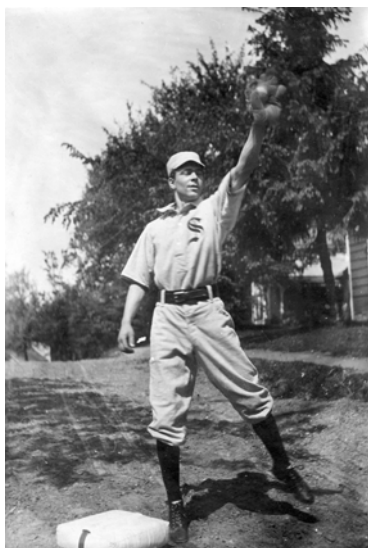
#### Want some extra cash?

Town of Bethlehem residents, ages 14-21, can register with Y.E.S. in several ways:

- Download the [student registration form from the Town website](#) (Online Services - Forms) and e-mail it to the Y.E.S. Director
- Mail the form to *Y.E.S. Director, 261 Elm Avenue, Delmar, NY 12054*
- Drop the form off at the Parks and Recreation office

For more information, contact the Y.E.S. Director, Rachel Promutico, at 439-4955 ext. 1608 or [YES@townofbethlehem.org](mailto:YES@townofbethlehem.org)

### News from the Town Historian



Clarence Earl makes the catch.

Bethlehem residents have enjoyed a long relationship with the game of baseball. The Echos of Slingerlands played from about 1889 to 1895. The Slingerland Village Wonders played from about 1901 to 1915. There was a Delmar team active in the Susquehanna League in the late 1920s and early 1930s and the Tri-Village Little League played its first game May 15, 1954 and continues strong today.

Do you have information about other teams that played in Bethlehem? Your Town Historian would love to hear from you. Contact Susan Leath, 439-4955 ext 1160 or [sleath@townofbethlehem.org](mailto:sleath@townofbethlehem.org). Many thanks to the Tri-Village Little League for sharing their scrapbook.

To read the entire article and view more vintage photographs, please visit the Town Historian's Articles at <http://www.townofbethlehem.org/pages/History/historyArticlesBaseball.asp>

### Senior Services News

---

#### **The File of Life – A Personal Medical History In An Emergency**

An in-home stored personal medical history for use by emergency responders during a medical crisis at your home.

File of Life is a readily identified red plastic magnetized "pocket", which attaches to your refrigerator and is easily recognized by emergency responders during an emergency. This file will contain, after being completed by you, your family's personal medical history, including prescription drugs, allergies and other critical and pertinent medical information which may very well be life-saving in an emergency.

The File of Life pockets are available through either the Senior Services Office or Emergency Management Office at the Bethlehem Town Hall, 445 Delaware Avenue, Delmar, NY 12054, or by calling 518-439-4955.

---

#### **Senior Legal Services Program** Thursday, August 11

Where: Bethlehem Town Hall  
Appointments: 439-4955 #1176

The Senior Legal Services Program provides legal services for residents of Albany County who are 60 years of age or older. The program is funded by the Albany County Department for Aging and is staffed through the Legal Aid Society of Northeastern New York, Inc. If you cannot make this month's date, this program generally has dates once per month, contact one of the Outreach workers for more information.

**There is no cost for this program.**

---

### Senior Services Newsletter

To see all of the interesting activities, events, programs and services provided by Town's Senior Services department, pick up a copy of the bi-monthly Senior Services newsletter at the Senior Services Department, Room 110 at the Town Hall, on Senior Services transportation vehicles or on the Town's web site at <http://www.townofbethlehem.org/pages/Seniors/SeniorsBrochures.asp>.

---

### Not just for Seniors!

**Some programs may have age restrictions, many do not** (for example, Food Pantry, HEAP, LawHelp/NY, volunteers, Caregiver programs), please call for specifics, 439-4955. In order to participate in any programs or to volunteer, an [Intake Form](#) MUST be filled out first. Intake forms are available in the Senior Services office or [on the Town's web site](#).

### News from BEMO Bethlehem Emergency Management Office

#### State Fire Issues Safety Alert on Use of 'Fuel Gel' Products and 'Fire Pots'

The New York State Office of Fire Prevention and Control issued a Fire Safety Alert to advise fire service officials, code enforcement officials, and the public of the hazards associated with the use of "fuel gel" products and burning devices.

Deputy State Fire Administrator John F. Mueller said, "There have been recent incidents of severe burn injuries to residents in the state as a result of the improper use of fuel gel products and devices. These incidents involved the use of 'fuel gel' burning 'fire pots.' These pots are designed to be used as decorations in place of candles or other torches."

Fuel gel is an alcohol-based ignitable liquid with added ingredients which thicken the liquid to a consistency of syrup or a "gel" like appearance. Fuel gel is also available with an insect repellent additive, such as citronella.

The fuel is intended to be poured into a metal cup which is then inserted into a ceramic "fire pot." The fuel gel is then ignited and burns openly as a torch without a wick.

The alcohol base of the fuel gel by nature makes the product very volatile and comes with prominent safety warnings on the label. The thick consistency of the gel makes it stick to most surfaces including human skin and clothing.

Failure to **closely** follow all of the safety warnings can have and has had disastrous results including serious burn injuries and fire damage.

The Deputy State Fire Administrator urges all New Yorkers to use **extreme** caution when using any fuel gel burning device or product, and offers the following safety tips:

- Read the instructions carefully before utilizing the product or device
- **DO NOT** over fill the unit with fuel
- **DO NOT** add fuel to any lit flame or fire
- Use a sniffer to extinguish the flame – **DO NOT** attempt to blow out the fire
- In case of an emergency, **DO NOT** attempt to extinguish the fire with water
- **DO NOT** allow children to add or ignite the fuel at any time
- In well-lit areas, the flames produced by burning fuel gel may be hard to detect – keep devices away from all combustibles or anything that may catch on fire. A minimum of a three-foot radius is suggested
- Keep devices away from children and pets
- Place devices in a safe location to prevent accidental contact or exposure to skin or clothing
- NEVER leave a burning device unattended

### Town Awarded Bicycle Racks

The Town was recently awarded bicycle racks from CDTA/CDTC, which were installed by Town Highway Staff at the Elm Avenue Park and on Delaware Avenue.



Elm Avenue Park



Near the clock tower...



In front of Swifty's and Andriano's



Two racks located near Key Bank



## Did You Know?



### The Albany Carillon

The Albany Carillon, that stands tall over Albany City Hall, was originally purposed as a memorial for the soldiers who died in World War I.

The carillon was created as a part of a municipal building and thus is one of the few that is owned by a government, making it truly a people's carillon. It is also one of just 116 concert class carillons in the United States. Its 49 bells range in size from 11,200 pounds to just 27 pounds. Each metal bell creates its own distinct sound.

Source: <http://www.albanyny.org/>

## Straight From the Storm Drain...

### Stormwater Tips: **Vehicle Care**

Washing your car and degreasing auto parts at home can send detergents, as well as other contaminants, through the storm sewer system. Dumping automotive fluids into storm drains has the same effect as dumping the materials directly into a water body.



- Use a commercial car wash that treats or recycles its wastewater.
- Wash your car on a grassy area so the water infiltrates into the ground.
- Check your car, boat, motorcycle, machinery, and equipment for leaks and spills.
- Repair leaks and dispose of auto fluids/batteries at designated drop-off or recycling locations.
- Use ground cloths or drip pans beneath your vehicle. If a spill occurs, clean up spilled fluids with an absorbent material, such as kitty litter or sand.



### What is Stormwater Runoff?

Stormwater runoff is rain or melted snow that, instead of seeping into the ground, runs off into the storm sewer and into our waterways. It runs across rooftops, paved areas, bare soil, and sloped yards. On its way, the runoff picks up and transports soil, animal waste, salt, pesticides, fertilizers, oil and grease, debris and other potential pollutants. This polluted runoff degrades our lakes, streams, rivers, wetlands, and other waterways.

For more information, please see the Town of Bethlehem's Stormwater Management web page:

<http://www.townofbethlehem.org/pages/Stormwater/dpwSWStormwater.asp>

### It's the Law! All Dogs, Cats and Ferrets in NYS MUST Have a Current Rabies Vaccination

If you missed the Low Cost Vaccination Clinic at Elm Avenue Park, Albany County offers two more such clinics this year

The remaining Albany County clinics will be held as follows:

Saturday, September 17

1:00 - 4:00 p.m. (1-2:30 cats and ferrets,  
2:30-4 for dogs)

Village of Colonie Municipal Garage, 2  
Thunder Road, Colonie

Saturday November 5

1:00 - 4:00 p.m. (1-2:30 cats and ferrets,  
2:30-4 for dogs)

Village of Green Island Public Works  
Garage, Cohoes Avenue, Green Island

[Goto the Albany County Department of Health web site for more information and directions.](#)

### Bethlehem Police Animal Control finds three dogs

#### Looking for owners of found dogs

Available for adoption

Female, black, 4+ years of age, pit bull, found 7/23/2011 near 431 Wemple Road in Glenmont

Black with white spot on chest and top of muzzle, right side; nylon collar, heavy, friendly to people and dogs

Female, white/liver, approximately 2 years of age, pit bull, found 7/23/2011 near 44 Brookview Avenue in Delmar

White with liver spots; thin, toenails too long, healing sore on right rump, friendly to people and dogs

If you are or know the owner, please contact Bethlehem Animal Control at 439-9973. **If they are not adopted by 8/22/2011, they will be euthanized.**





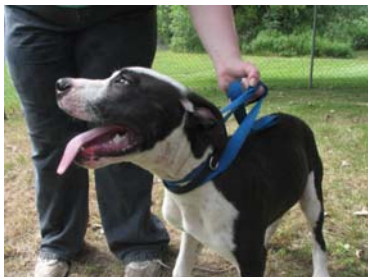
**Looking for owners of found puppy**

Available for adoption

Male, brown with white, less than 6 months of age, pit bull, found 7/27/2011 near Route 144 at Wemple Road in Glenmont

Still has puppy teeth, black collar, good with people, including children, and other dogs

If you are or know the owner, please contact Bethlehem Animal Control at 439-9973. **If not adopted by 8/26/2011, he will be euthanized.**



### Know What's Below BEFORE You Dig

Planning a home improvement job? Planting a tree? Installing a fence or deck? WAIT! Here's what you need to know first:

Whether you are planning to do it yourself or hire a professional, smart digging means calling 811 before each job. Homeowners often make risky assumptions about whether or not they should get their utility lines marked, but every digging job requires a call –es and shrub

See this link for more info: <http://www.call811.com/>




---

### Albany County News

---



[Albany County Department of Health](#) Immunization Clinics, 4-6 p.m. on the 1st and 3rd Wednesdays of the month, **call** for appointment or more information, 447-4602 for infants and children, 447-4589 for college immunizations. College immunizations are available for a fee. For this month, the clinic dates should be August 3 and August 17, call ahead for confirmation of date and time.

---

#### **Albany County Offers Free Prescription Discount Card to All County Residents**

Program Provides Discounts Up to 20% on Brand Name Drugs, Up to 70% on Generic  
Please see <http://www.albanycounty.com/departments/executive/news.asp?id=2644> for more information.

---

Foster and Adoption Families Needed! For more information go to the [Albany County Department for Children, Youth and Families web site](#).

---

#### **Tick-borne diseases on the rise**



Lyme disease and other tick-borne diseases are an important health concern in New York State. Lyme disease remains endemic in Albany County and, also being seen are a small, but significant, increase in other tick-borne diseases each year.

The good news is that Lyme disease can be prevented. A FREE tick removal kit is available for Albany County residents as well as information on repellants, Lyme disease in pets and more by visiting the County's Department of Health web page at <http://www.albanycounty.com/departments/health/lyme.asp> or by calling 447-4648.

---

## GREEN ALBANY COUNTY

### An online resource to help residents and businesses lower energy use and save money on their utility bills

[Green Albany County](#) is a one stop information resource for energy saving tips, rebates, incentives and tax credits and green products and services. The website also highlights the County's energy efficiency projects and other green initiatives.

A monthly newsletter will also be available to residents who wish to provide their email addresses on the [GreenAlbanyCounty.org](#) website. The newsletter will provide information relating to clean energy grants and incentives, as well as ongoing projects and tips on how to become more energy efficient.

---

### Drinking Water from Bethlehem Selected As Best Tasting Water in Albany County

The Albany County Health Department has announced the results of the 2011 Albany County Drinking Water Taste Test, which was conducted at the Harold L. Joyce County Office Building at 112 State Street on June 29, 2011.

The drinking water from the Town of Bethlehem won with 31 total points, while the Latham Water District finished second with 28 total points.

Samplers were asked to try the water and then fill out a survey indicating their preferences. Two points were awarded for each first place vote and one point was awarded for each second place vote. The Cities of Albany and Cohoes, the Town of Guilderland and the Village of Green Island also participated.

The Town of Bethlehem will go on to compete in the regional competition to be held on Thursday, July 28th at Alive at Five. The top two winners at the regional contest will advance to the state finals to be held at the New York State Fair in Syracuse on August 30th. The winner of the State competition gets bragging rights as the best tasting water in New York State.

The New York State Water Taste Test has been held for 25 years and highlights the importance of both taste and quality in a resource essential to public health. The taste contest is a nonscientific competition co-sponsored by DOH and the New York Section of the American Water Works Association (AWWA).

Source: <http://www.albanycounty.com/departments/health/news.asp?id=2751>

## SUN AND WATER SAFETY TIPS

### Sun Safety Tips

- Children receive 3 times more ultraviolet (UV) radiation than adults do each year and can benefit most from sun protection. For tips on how to protect kids from the sun, visit <http://www.msnbc.msn.com/id/13151714/>
- Apply sunscreen and lip balm with an SPF 15 or higher at least 20-30 minutes before going outdoors or into the water. Re-apply sunscreen every 2 hours or after swimming or physical activity. No sunscreen provides all day protection.
- The harmful effects of UV radiation accumulate over time; therefore, sun protection should be a lifelong habit, not just an occasional activity.
- Along with sunscreen, wear protective clothing, hat, shirt, shorts or pants, and sunglasses when not swimming. The more cover, the better!
- For sunscreen facts and myths, please visit the American Academy of Dermatology web site at <http://www.aad.org/public/News/Derminfo/DInfoSunscreenFAQ.htm>, the American Cancer Society web site at <http://www.cancer.org/healthy/toolsandcalculators/quizzes/app/sun-safety-quiz>, and/or [http://pediatrics.about.com/od/sunscreen/a/sunscreen\\_myths.htm](http://pediatrics.about.com/od/sunscreen/a/sunscreen_myths.htm)
- FDA Announces New Rules for Sunscreen Labels - <http://www.cancer.org/Cancer/news/News/fda-announces-new-rules-for-sunscreen-labels>

## Water Safety Tips

- Never leave young children alone – even for one minute!
- Never consider children WATER SAFE despite swimming skills!
- Never dive in shallow water or water of unknown depth
- Never run, always walk, around a pool deck
- Water skiing, tubing or the like requires TWO persons (one driving and one spotting) in the boat or on the personal watercraft doing the towing
- New York State law requires any person between the ages of 10 and 18 to possess a boating safety certificate to operate any mechanically powered vessel, HOWEVER, ALL personal watercraft operators (jet skis, e.g.) MUST possess a safety certificate AND must be at least 14 years of age; for more information, please see <http://www.dec.ny.gov/environmentdec/19127.html>

### WEATHER RELATED HEALTH TIPS

When the weather heats up, try to limit heavy physical activities like walking, jogging, or lawn mowing to the cooler hours of the day. Dress appropriately and drink plenty of water. Over-exertion in hot, humid weather can lead to medical conditions related to heat - heat exhaustion and heat stroke. Children, elderly persons and those with weight or alcohol problems along with persons on certain medications or drugs very susceptible to heat reactions.

**Never leave children, pets, or those who require special care in a parked car or vehicle during periods of intense summer heat even with the windows partially opened. Temperatures inside a vehicle can reach over 140 degrees Fahrenheit quickly. Exposure to such high temperatures can kill within a matter of minutes.**

#### Recognizing Heat Exhaustion

- Skin - pale, moist, clammy, cool
- Body Temperature - normal
- Other signs - dizzy, nauseated, weak

#### Treating Heat Exhaustion

- Have victim lie down in a cool spot, out of the sun
- Give the victim plenty of fluids especially water
- Offer a salty snack such as pretzels or saltines

With **heat stroke**, the body loses its ability to sweat even though the body's temperature continues to rise. It is a life-threatening medical emergency, the victim may suffer serious complications or even die if first aid measures are not immediately carried out.

#### Recognizing Heat Stroke

- Skin - red, dry, hot
- Body temperature - above normal (104+ degrees)
- Other signs - confused, unconscious, convulsions

#### Treating Heat Stroke

- Call for emergency help at once
- Get the victim out of the sun and in a cool spot
- Remove the victim's clothing
- Cool the victim's body by applying cool water in the form of wet towels, sponges, spray from a hose or ice packs
- Monitor the victim's body temperature (stop cooling when it reaches 102 degrees F)
- Do not give anything by mouth to an unconscious person

### DRINK PLENTY OF WATER!

Drink plenty of fluids, particularly water (at least 2-4 glasses of water per hour during extreme heat), even if you do not feel thirsty. If you wait until you are thirsty, you are already dehydrating. Your body needs water to keep cool. Avoid beverages containing alcohol or caffeine.

For more information on weather safety, see the New York State Emergency Management Office's weather page at <http://www.dhSES.ny.gov/oem/weather/>

### **Store wants your ZIP code? Just say no**

Why does a store clerk ask for your ZIP code when you buy something with a credit card?

Here's one answer you might not like: Knowing your name and ZIP code allows a retailer to easily find your entire address so they can send you lots of junk mail and also sell your address to other marketers.

Not exactly the reason you thought, eh? It seems that many people think stores use ZIP codes to figure out where customers are coming from or to confirm that you and your credit card are a match.

In fact, there are several reasons why you should say no when a store clerk asks for your ZIP code or any other personal information.

The store's agreement with the credit card company does not require it. CreditCards.com said:

Visa and MasterCard state in their merchant rules that if the back of the card is signed, a merchant may not make giving personal information a condition of making the sale. If the card is not signed, they may ask for identifying information. American Express requires merchants to check only the signature on the back of the card and does not require any additional identification. Discover does not prohibit a merchant from asking for such information, a spokeswoman said.

They, however, can ask for ID if they have good reason to think you're using the card fraudulently.

It may be against state law. The little-known reason stores want credit card customers' ZIP codes came to light after a California woman sued Williams-Sonoma over the issue. The California Supreme Court agreed that asking for a ZIP code violates a state law prohibiting retailers from requesting personal identification information from credit card customers. (The ruling does not apply to credit card sales at the gas pump, where you might be required to punch in your ZIP code to process the payment. That info isn't kept by the station.)

You could be exposing yourself to possible identity theft. In fact, there are very few reasons to share any type of personal information with retailers. CreditCards.com said:

Consumer advocates advise just saying no when asked to give information beyond what is necessary for a transaction -- an address for shipping purposes or a Social Security number if you're opening a line of credit, for instance.

source: <http://money.msn.com/credit-cards/article.aspx?post=7f42ed87-0191-4ece-bd89-f5ea04aa940a>1=33001>



#### **Did You Know?**



- If you have a question to Town government or operations, you can visit our [Frequently Asked Questions page](#) on our web site to look for quick references.



#### **We'd like to hear from you**

Let us know what you think of this newsletter. Please use the feedback form on the Town's web site, [www.townofbethlehem.org/pages/about/contact.asp](http://www.townofbethlehem.org/pages/about/contact.asp)

[Click here for a printable version of this e-Newsletter](#)

You are receiving this e-mail because you have subscribed to our e-newsletter. If you wish to be taken off our monthly mailing, click here to [unsubscribe](#) or reply to this e-mail with Unsubscribe as the subject.

To change your e-mail address, please send a message to webmaster @ townofbethlehem.org with both your old and new addresses.

If you were forwarded this e-newsletter and would like to receive this monthly information at your own e-mail address, please fill out the form at <http://www.townofbethlehem.org/pages/Newsletter/newsletter.asp>.

Town of Bethlehem | 445 Delaware Avenue | Delmar | NY | 12054

web: <http://www.townofbethlehem.org>

disclaimer: <http://www.townofbethlehem.org/pages/includes/disclaimer.asp>

For the best viewing of the Town's e-Newsletter in **gmail**, scroll all the way down the page and click on "basic HTML" next to "Gmail view:" at the bottom of the screen.