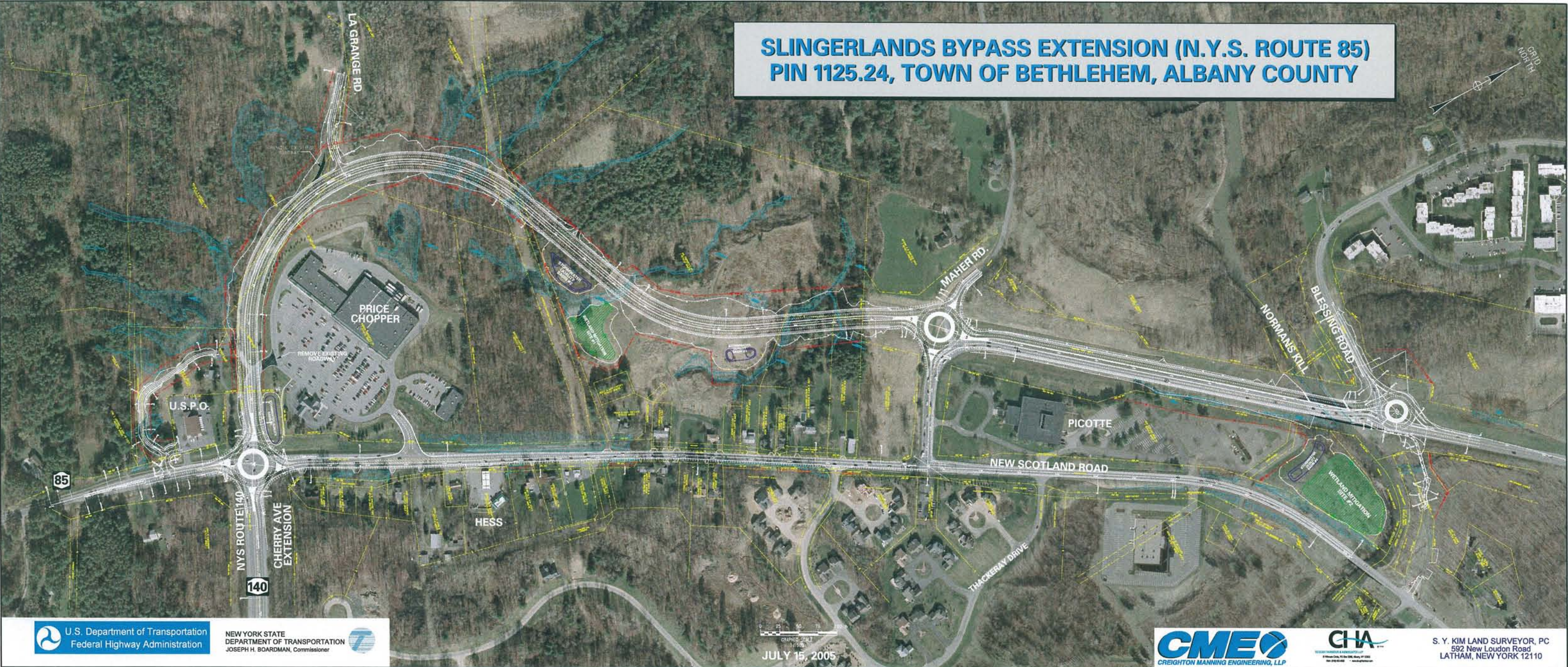


**SLINGERLANDS BYPASS EXTENSION (N.Y.S. ROUTE 85)
PIN 1125.24, TOWN OF BETHLEHEM, ALBANY COUNTY**



U.S. Department of Transportation
Federal Highway Administration

NEW YORK STATE
DEPARTMENT OF TRANSPORTATION
JOSEPH H. BOARDMAN, Commissioner

0 25 50 75
feet
JULY 15, 2005

CME
CREIGHTON MANNING ENGINEERING, LLP

CHA
CONSULTANTS IN ARCHITECTURE

S. Y. KIM LAND SURVEYOR, PC
592 New Loudon Road
LATHAM, NEW YORK 12110