

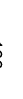






# EXISTING WETLANDS

DEIS Figure 8.a  
Vista Technology Campus  
September 2006

## KEY

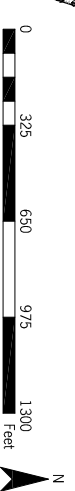
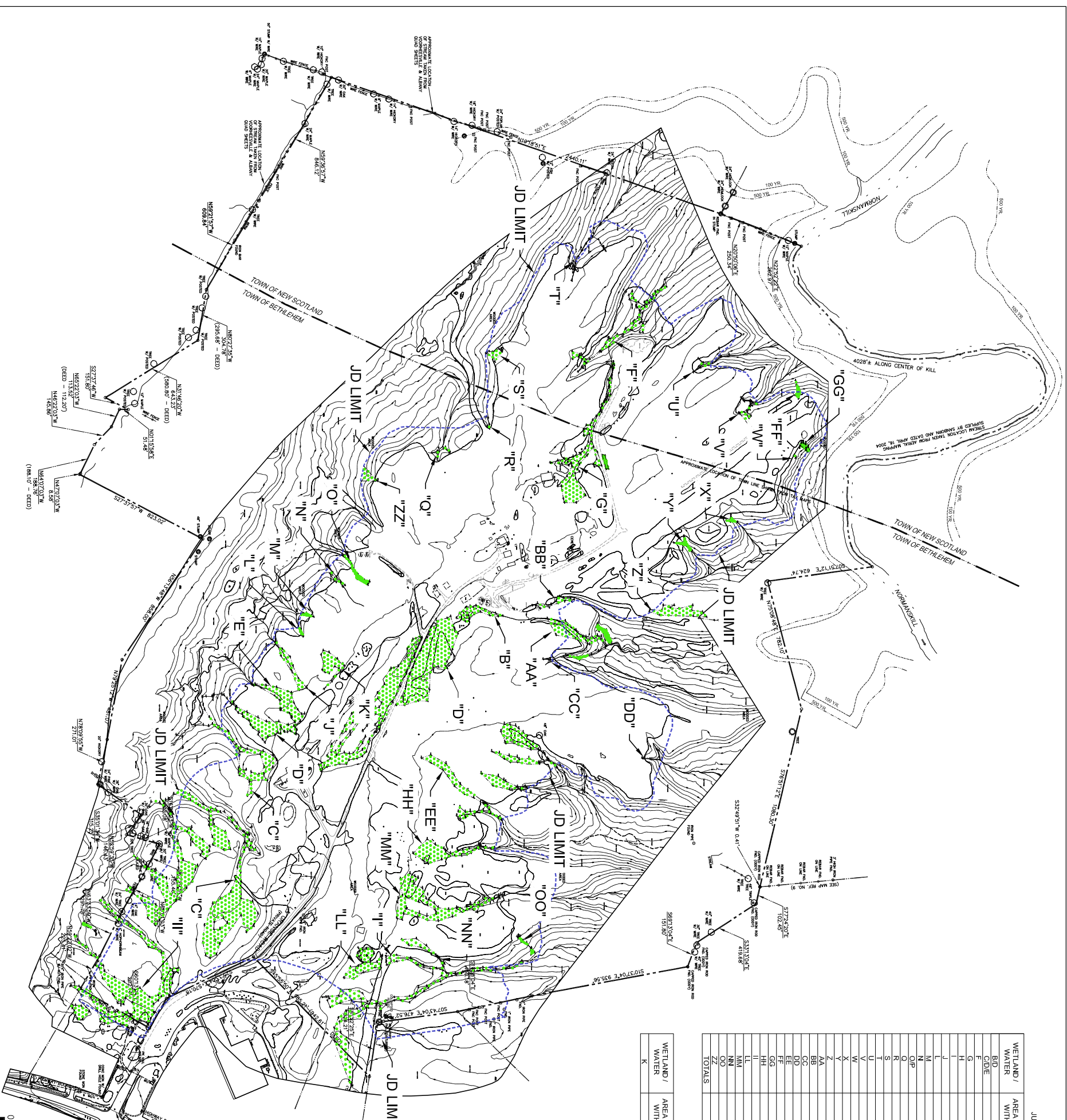
-  EXISTING WETLANDS
-  PROPERTY BOUNDARY
-  CONTOURS (10' INTERVAL)
-  OVERHEAD UTILITY
-  500 YR. FLOOD PLAIN
-  100 YR. FLOOD PLAIN
-  JD LIMIT

JURISDICTIONAL WETLANDS / WATERS

WETLAND / WATER	AREA OF WETLAND / WATERS WITHIN JD BOUNDARY (ac)	LENGTH OF INTERMITTENT STREAM WITHIN JD BOUNDARY (LF)
B/D	2.08	314
E	1.33	507
F	0.35	818
G	0.98	-
H	1.85	1519
I	0.20	74
J	0.01	65
K	0.02	139
L	0.02	223
M	0.07	328
N	0.17	81
O	0.02	-
P	0.07	370
Q	0.10	176
R	0.04	116
S	0.04	67
T	0.01	130
V	0.02	210
W	0.06	-
X	0.01	85
Y	0.01	-
Z	0.16	48
AA	0.08	48
BB	0.08	142
CC	0.04	659
DD	1.30	34
EE	0.01	66
FF	0.03	164
GG	0.59	258
HH	0.76	576
II	1.13	101
MM	0.14	182
NN	0.06	101
OO	0.10	8875
ZZ	0.26	-
TOTALS	17.41	8875

### ISOLATED WETLANDS

WETLAND / WATER	AREA OF WETLAND / WATERS WITHIN JD BOUNDARY (ac)	LENGTH OF INTERMITTENT STREAM WITHIN JD BOUNDARY (LF)
K	0.26	-



Topographic Survey provided by:  
Clough Harbor & Associates  
Ill Winners Circle  
P.O. Box 5269  
Albany, New York 12205-0269  
April, 2004

Wetland Data provided by:  
Clough Harbor & Associates &  
Terrestrial Environmental Services

PROJECT # 05104.11M  
Copyright © 2006 Saratoga Associates. All Rights Reserved.  
This map is computer generated using data acquired by Saratoga Associates from various sources and is intended only for reference, conceptual planning and residential purposes. This map is not intended for, and shall not be used for, residential purposes, property lines, location of objects or to provide any other information typical, needed for construction or any other purpose when engineered plans or land surveys are required.  
FILE: SV200505104VE.1 Conceptual Design05104 WETLANDS.dwg

**SARATOGA ASSOCIATES**

Landscape Architects, Architects,  
Engineers, and Planners, P.C.  
NEW YORK CITY > SARATOGA SPRINGS

VISTA DEVELOPMENT  
GROUP, LLC.